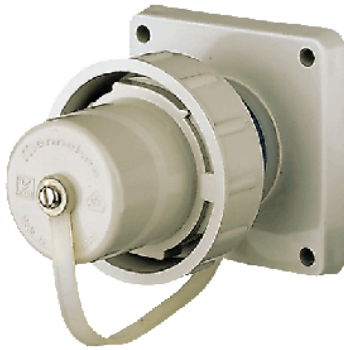
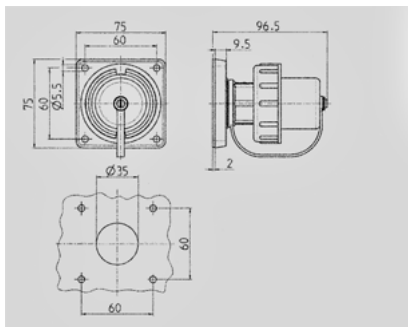


**Panel mounted inlet SCHUKO® - Part no. 10852**

- screw terminals
- with combined PE-conductor acc. to german and french-belgian standard
- with bayonet ring
- protective cap attached by a strap

**Technical information**

|                       |                 |
|-----------------------|-----------------|
| Ampere                | 16 A            |
| Poles                 | 2 p+E           |
| Voltage               | 230V            |
| Connection technology | Screw terminals |
| Contact               | standard        |
| Protection type       | IP 68           |



Drawing  
2 MB 164

Dim. in mm