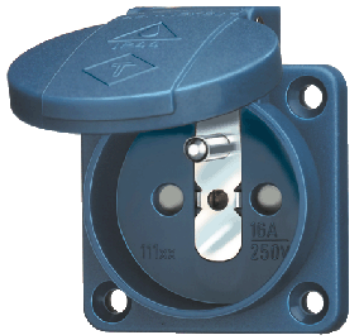


Grounding-type panel mounted receptacle - Part no. 11161


- French-belgian standard
- with hinged lid
- 3 plug-in terminals as connecting terminals for 1.5 - 2.5 mm²
- other colours on request

Technical information

Ampere	16 A
Poles	2 p+E
Voltage	230V
Shutter	yes
Connection technology	Plug-in terminals
Contact	standard
Protection type	IP 44

