

# GT21-03SDCD

## GT21-03SDCD General Description

GRAPHIC OPERATION TERMINAL <b>GOT2000</b>	Manual Number	JY997D62001B
	Date	April 2015

This manual describes the part names, dimensions, mounting, and specifications of the product. Before use, read this manual and manuals of relevant products fully to acquire proficiency in handling and operating the product. Make sure to learn all the product information, safety information, and precautions. And, store this manual in a safe place so that you can take it out and read it whenever necessary. Always forward it to the end user.  
Registration  
The company name and the product name to be described in this manual are the registered trademarks or trademarks of each company.

Effective April 2015  
Specifications are subject to change without notice.  
© 2014 MITSUBISHI ELECTRIC CORPORATION

### Safety Precaution (Read these precautions before using.)

Before using this product, please read this manual and the relevant manuals introduced in this manual carefully and pay full attention to safety to handle the product correctly.  
The precautions given in this manual are concerned with this product.  
In this manual, the safety precautions are ranked as "WARNING" and "CAUTION".

	Indicates that incorrect handling may cause hazardous conditions, resulting in death or severe injury.
	Indicates that incorrect handling may cause hazardous conditions, resulting in medium or slight personal injury or physical damage.

Depending on circumstances, procedures indicated by "CAUTION" may also be linked to serious results. In any case, it is important to follow the directions for usage.

<b>MOUNTING PRECAUTIONS</b>		<b>WARNING</b>
<ul style="list-style-type: none"> <li>Use the SD card unit in the environment that satisfies the general specifications described in this manual. Not doing so can cause an electric shock, fire, malfunction or product damage or deterioration.</li> <li>When mounting the SD card unit to the GOT, mount it on the side of the GOT, and tighten the tapping screws in the specified torque range (0.3 N·m to 0.6 N·m) with a screwdriver. Undertightening can cause the GOT to drop, failure or malfunction. Overtightening can cause a drop, failure or malfunction due to the damage of the screws or the GOT.</li> <li>Be sure to shut off all phases of the external power supply used by the system before mounting or removing the SD card unit to/from the GOT. Not doing so can cause the unit to fail or malfunction.</li> </ul>		

<b>OPERATION PRECAUTIONS</b>		<b>WARNING</b>
<ul style="list-style-type: none"> <li>Securely connect the SD card unit to the specified connector in the GOT while the GOT is turned OFF. Connection failure may cause malfunction.</li> <li>Before touching the SD card unit, always touch grounded metals, etc. to discharge static electricity from human body, etc. Not doing so can cause the unit to fail or malfunction.</li> </ul>		

<b>DISPOSAL PRECAUTIONS</b>		<b>CAUTION</b>
<ul style="list-style-type: none"> <li>When disposing of this product, treat it as industrial waste.</li> </ul>		

<b>PRECAUTIONS WHEN THE DATA STORAGE IS IN USE</b>		<b>WARNING</b>
<ul style="list-style-type: none"> <li>If the SD card mounted on drive A of the GOT is removed while the GOT is accessed, processing for the GOT might be interrupted about for 20 seconds. The GOT cannot be operated during this period. The functions that run in the background including a screen updating, alarm, logging, scripts, and others are also interrupted. Since this interruption makes an impact to the system operation, it might cause failure. After inhibiting access to the SD card on the GOT utility screen, check that the SD card access LED is off and remove the SD card.</li> </ul>		

<b>PRECAUTIONS WHEN THE DATA STORAGE IS IN USE</b>		<b>CAUTION</b>
<ul style="list-style-type: none"> <li>If the data storage mounted on the GOT is removed while the GOT is accessed, the data storage and files are damaged. To remove the data storage from the GOT, check that the access to the data storage in SD card access LED, the system signal, and others is not performed.</li> <li>If the GOT is turned OFF while it is accessing the SD card, the SD card or file may be damaged.</li> <li>When removing the SD card from the GOT, make sure to support the SD card by hand as it may pop out. Failure to do so may cause the SD card to drop from the GOT, resulting in a failure or break.</li> <li>Before removing the USB device from the GOT, follow the procedure for removal on the utility screen of the GOT. After the successful completion dialog is displayed, remove the USB device by hand carefully. Failure to do so may cause the USB device to drop from the GOT, resulting in a failure or break.</li> </ul>		

### Manual

The following shows manuals relevant to this product.

#### Detailed Manual

Manual name	Manual number (Model code)
GOT2000 Series User's Manual (Hardware)	SH-081194ENG-A (1D7MJ5)
GOT2000 Series User's Manual (Utility)	SH-081195ENG-A (1D7MJ6)

For detailed manuals, refer to the PDF manuals stored in the DVD-ROM for the drawing software used.

#### Relevant Manuals

For relevant manuals, refer to the Help or the PDF manuals stored in the DVD-ROM for the drawing software used.  
The latest manuals are also available from MITSUBISHI ELECTRIC FA Global Website (<http://www.MitsubishiElectric.co.jp/fa>).

#### Before using the GOT

Connect the connector of the GOT to the connector of the battery.  
Refer to the GOT2000 Series User's Manual (Hardware) for the connection instructions.

For details on the GOT specifications, installing instructions, wiring, maintenance and inspection, or checking procedure for the version and the compatible standard, refer to the GOT2000 Series User's Manual (Hardware).

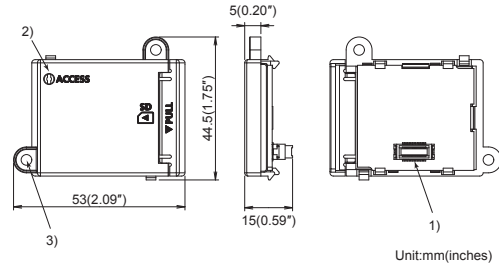
### 1. FEATURES

The SD card unit is used to mount the SD card to the GOT main unit.

#### 1.1 Bundled Items

Bundled item	Quantity
M3×8 tapping screws for the GOT installation: 2 pcs.	2
GT21-03SDCD General Description (This manual)	1

### 2. Part Names and External Dimensions



Number	Name	Description
1)	Connector for mounting to the GOT	-
2)	SD card access LED	ON: SD card installed OFF: SD card not installed or SD card installed but removal possible
3)	Mounting fitting	Direct mounting hole

### 3. Specifications

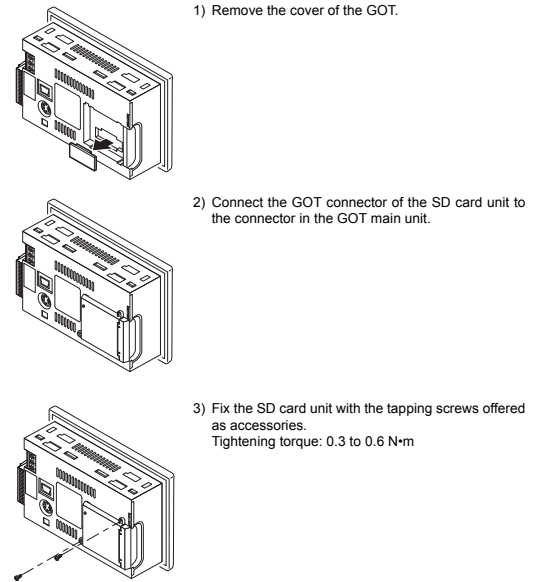
#### 3.1 General Specifications

The general specifications are same as those of the GOT main unit.

Refer to the following.

→ GOT2000 Series User's Manual

### 4. Mounting



This manual confers no industrial property rights or any rights of any other kind, nor does it confer any patent licenses. Mitsubishi Electric Corporation cannot be held responsible for any problems involving industrial property rights which may occur as a result of using the contents noted in this manual.

#### Warranty

Mitsubishi will not be held liable for damage caused by factors found not to be the cause of Mitsubishi; opportunity loss or lost profits caused by faults in the Mitsubishi products; damage, secondary damage, accident compensation caused by special factors unpredictable by Mitsubishi; damages to products other than Mitsubishi products; and to other duties.

	<b>For safe use</b>
<ul style="list-style-type: none"> <li>This product has been manufactured as a general-purpose part for general industries, and has not been designed or manufactured to be incorporated in a device or system used in purposes related to human life.</li> <li>Before using the product for special purposes such as nuclear power, electric power, aerospace, medicine or passenger movement vehicles, consult with Mitsubishi Electric.</li> <li>This product has been manufactured under strict quality control. However when installing the product where major accidents or losses could occur if the product fails, install appropriate backup or failsafe functions in the system.</li> </ul>	



GT21-03SDCD SD卡模块

GT21-03SDCD 概述



手册号	JY997D62001B
日期	2015年4月

非常感谢选购本公司产品。

本手册只对GT21-03SDCD SD卡模块的安全须知和规格进行说明。因此，有关GOT的设计和施工以及作图等事项请分别参照GT Designer3相关手册。在使用本产品之前，请务必熟读本手册以及相关手册，了解机器本身的功能和信息安全以及注意事项后使用。

关于商标

在本手册出现的各种商标分别对应各公司的名称，产品名称。

该印刷品发行于2015年4月。

在未告知的情况下产品的规格可能有所变更，请预先了解。

© 2014 Mitsubishi Electric Corporation

安全注意事项

(使用前请务必仔细阅读)

在使用本产品时，请务必熟读本手册以及本手册中介绍的相关手册。同时请务必充分注意安全事宜，正确使用。

本手册中所述注意事项仅为本产品直接相关内容。

在本手册中，用“警告”和“注意”对安全注意事项进行等级区分。

<b>警告</b>	错误操作可能引起危险情况发生，造成人员重伤或死亡。
<b>注意</b>	错误操作可能引起危险情况发生，造成人员中等程度的伤害、轻伤或物品损坏。

此外，即使是注意的事项，因具体情况不同，也可能引发重大事故。由于记载的都是重要的内容，所以请务必遵守。

安装注意事项



- 请在符合本说明书中所规定的一般规格环境下使用GOT。在不符说明书中规定的一般规格环境下使用SD卡模块，可能会引起触电、火灾、误动作、产品损坏或使产品性能变更现象。
- 将SD卡模块安装到GOT时，应安装到GOT侧面，用螺丝刀在规定扭矩范围内(0.3N·m~0.6N·m)紧固自攻螺栓。如果安装螺栓太松，可能导致脱落、故障、误动作。如果安装螺栓太紧，可能导致螺栓及设备的损坏而引起的脱落、故障、误动作。
- 在将SD卡模块安装到GOT本体上或从GOT本体上拆卸时，必须将系统中正在使用的所有外部电源全部断开之后再进行操作。如未全部断开，可能导致产品故障或误动作现象。

操作注意事项



- 请在GOT电源OFF的状态下将SD卡模块和GOT切实地安装到规定的连接器上。否则可能会因连接不良导致误动作。
- 在触碰SD卡模块前，必须先与接地的金属物等接触，释放掉人体等所携带的静电。如果不释放掉静电，可能导致产品故障或者误动作。

报废处理注意事项



- 产品报废时，应作为工业废弃物处理。

数据存储设备使用时的注意事项



- 如在GOT访问过程中拔下安装在GOT的A驱动器上的SD卡，GOT的处理将会停止约20秒左右。在此期间，将无法操作GOT，且画面的更新、报警、日志、脚本等在后台动作的功能也会停止。卸下SD卡时，请在GOT应用程序画面操作中中将SD卡访问设为禁止状态后，确认SD卡访问LED处于熄灭状态后进行。

数据存储设备使用时的注意事项



- 如在GOT访问过程中拔下安装在GOT上的数据存储设备，可能会导致数据存储设备或文件损坏。如需从GOT上拔下数据存储设备，请在通过SD卡存取LED或系统信号等确认当前未对数据存储设备进行访问之后再拔下。
- GOT访问SD卡时，如关闭GOT电源，可能会损坏SD卡或文件。
- 取出SD卡时，由于SD卡可能会弹出，请用手抵住SD卡将其取出。否则可能会因为脱落而导致SD卡损坏或故障。
- 取出数据存储设备时，请在GOT的实用菜单画面进行数据存储设备的取出操作，在弹出正常结束通知对话框后，再用手抵住数据存储设备将其取出。否则可能会因为脱落而导致数据存储设备损坏或故障。

关于操作手册

本产品相关的手册如下所示。

详细手册

手册名称	手册编号(型号代码)
GOT2000系列本体使用说明书(硬件篇)	SH-081202CHN (1D7MK4)
GOT2000系列本体使用说明书(实用菜单篇)	SH-081203CHN (1D7MK5)

详细的手册内容请参阅存储于所使用绘图软件的DVD-ROM或CD-ROM中的PDF手册。

相关操作手册

相关操作手册请参阅存储于所使用绘图软件的DVD-ROM或CD-ROM中的HELP或PDF手册。

可从三菱电机LFA网站

(<http://www.MitsubishiElectric.co.jp/fa>)获取最新手册。

使用之前

请在使用GOT之前将GOT的连接器与电池(另售GT11-50BAT)的连接器连接。

连接方法请参阅GOT2000系列本体使用说明书(硬件篇)。

关于GOT的详细规格、安装方法、接线、维护与检查、版本以及适合的规格的确切方法等，请参阅GOT2000系列本体使用说明书(硬件篇)。

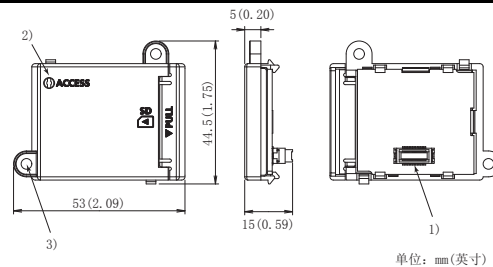
1. 概要

为了在GOT本体上安装使用SD卡，需要使用SD卡模块。

1.1 随机配件

随机配件	随机配件数
M3×8自攻螺钉用于GOT安装 2个。	2
GT21-03SDCD 概述(本手册)	1

2. 各部位的名称和外形尺寸



单位: mm(英寸)

编号	名称	内容
1)	连接器安装到GOT	-
2)	SD卡访问LED	亮灯: 安装SD卡时 熄灭: 未安装SD卡或安装(可取出)SD卡时
3)	GOT固定螺丝孔	直接安装孔

3. 一般规格

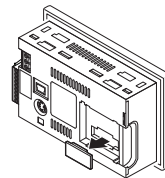
3.1 一般规格

关于一般规格，与GOT本体相同。请参照以下内容。

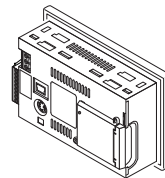
→ GOT2000系列 主机使用说明书

4. 安装

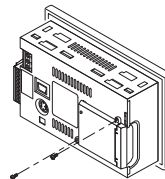
1) 卸下GOT的封面。



2) 在GOT本体连接器上，安装SD卡模块的GOT连接用连接器。



3) 用附带的自攻螺栓固定SD卡模块。  
拧紧扭矩: 0.3~0.6N·m



在本书中，并没有对工业知识产权及其它权利的执行进行保证，也没有对执行权进行承诺。对于因使用本书中所记载的内容而引起的工业知识产权上的各种问题，本公司将不负任何责任。

关于质保

对于非属本公司责任事故所造成的损害、和由本公司产品的故障所引起的客户设备损坏、利益损失以及无论本公司有否预见到的由于特别事件所造成的损害、间接损害、事故赔偿、非本公司产品以外的损伤以及其它方面的赔偿，本公司概不负责。

安全使用注意事项

- 本产品是以一般工业为对象，作为通用产品所制造的产品，不可以用于关系到人身安全的状况下所使用的设备或者系统为目的而设计、制造的产品。
- 在计划将本产品应用于原子能、电力、航空航天、医疗、载人运载工具的设备或者系统等的特殊用途时，在对此进行研究商讨之际，请照会本公司的营业窗口。
- 虽然本产品是在严格的质量管理体制下进行制造的，但是在计划将本产品应用于由于本产品的故障有可能导致重大事故或者损失的设备上时，请在系统上设置备用及失效安全系统。