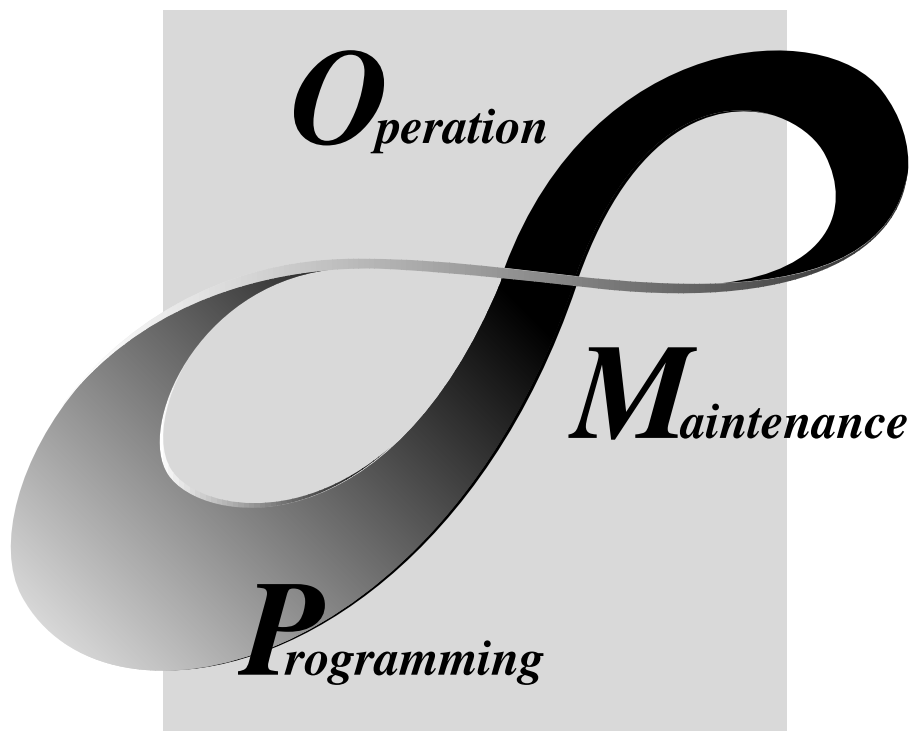


GX Developer Version 8

Operating Manual

(Startup)

mitsubishi



MELSOFT
Integrated FA Software

SW8D5C-GPPW-E

REVISIONS

* The manual number is given on the bottom left of the back cover.

Print Date	* Manual Number	Revision
Feb., 2003	IB(NA)-0800242E-A	First edition
Mar., 2003	IB(NA)-0800242E-B	Correction Section 4.2
Jul., 2003	IB(NA)-0800242E-C	Correction Appendix 2
Jun., 2004	IB(NA)-0800242E-D	Correction Section 2.2, Chapter 3, Section 3.1.2, Section 4.1
Apr., 2005	IB(NA)-0800242E-E	Correction Section 2.2
Jun., 2005	IB(NA)-0800242E-F	Correction Section 2.2
Apr., 2007	IB(NA)-0800242E-G	Correction Section 2.2

Japanese Manual Version SH-080355-H

This manual confers no industrial property rights or any rights of any other kind, nor does it confer any patent licenses. Mitsubishi Electric Corporation cannot be held responsible for any problems involving industrial property rights which may occur as a result of using the contents noted in this manual.

© 2003 MITSUBISHI ELECTRIC CORPORATION

— SOFTWARE USER REGISTRATION —

After agreeing to the terms of the Software License Agreement included in the package, please access the MELFANSweb Home Page (<http://www.MitsubishiElectric.co.jp/melfansweb>) and make a software user registration. (User registration is free of charge.)

You can also make a registration by faxing or mailing the "Software Registration Card" packed with the product.

1. Software Registration

You can make a software registration by accessing the MELFANSweb Home Page or faxing or mailing the "Software Registration Card" packed with the product.

After you have made a software registration, we will register the user and send the "Software registration confirmation" together with the user ID.

The latest information of new product, version up, and other will be available by direct mail.

2. Notes on Contact

Please ask questions concretely and clearly using terms listed in the manual.

When requesting us to solve a problem, provide us with detailed information for reproducing the problem.

In addition, contact the respective manufacturers when asking questions about the operating system (OS) or the other vender's software products

User registration is valid only in Japan.

INTRODUCTION

Thank you for choosing the Mitsubishi MELSOFT series comprehensive Factory Automation software. Read this manual and make sure you understand the functions and performance of MELSOFT series PLC thoroughly in advance to ensure correct use.

CONTENTS

REVISIONS	A- 1
SOFTWARE USER REGISTRATION.....	A- 2
INTRODUCTION.....	A- 3
CONTENTS.....	A- 3
ABOUT MANUALS	A- 4
ABBREVIATIONS AND GENERIC TERMS IN THIS MANUAL	A- 5
PRODUCT MAKEUP	A- 6
1. GENERAL DESCRIPTION	1- 1 to 1- 2
2. SYSTEM CONFIGURATION	2- 1 to 2- 3
2.1 System Configuration.....	2- 1
2.2 Operating Environment.....	2- 1
3. INSTALLATION AND UNINSTALLATION	3- 1 to 3-14
3.1 Installation	3- 1
3.1.1 Installing Procedure.....	3- 1
3.1.2 Installing Operation	3- 2
3.2 Uninstallation.....	3- 8
3.3 Installing the USB Driver.....	3-10
4. USING GX Developer	4- 1 to 4- 6
4.1 GX Developer Edit Window and Various Tools	4- 1
4.2 Dialog Box Basic Operations.....	4- 4
APPENDICES	Appendix-1 to Appendix-4
APPENDIX 1 Questions and Answers about Personal Computers.....	Appendix- 1
APPENDIX 2 Notes on GX Developer	Appendix- 2

About Manuals

The following lists the manuals for this software package.
Refer to the following table when ordering manuals.

Related Manuals

Manual Name	Manual Number (Model Code)
GX Developer Version8 Operating Manual Describes the online functions of GX Developer including the programming procedure, printing out procedure, monitoring procedure, and debugging procedure. (Sold separately.)	SH-080373E (13JU40)
GX Developer Version8 Operating Manual (SFC) Describes the editing and monitoring operations of the SFC functions using GX Developer. (Sold separately.)	SH-080374E (13JU42)
GX Developer Version8 Operating Manual (MELSAP-L) Describes the editing and monitoring operations of the MELSAP-L format SFC functions using GX Developer. (Sold separately.)	SH-080375E (13JU43)
GX Developer Version8 Operating Manual (Function Block) Describes the editing and monitoring operations of the function blocks using GX Developer. (Sold separately.)	SH-080376E (13JU44)
GX Developer Version 8 Operating Manual (Structured Text) Explains creating structured text (ST) program and printing out using GX Developer. (Sold separately.)	SH-080367E (13JU37)
GX Simulator Version6 Operating Manual Describes the setting and operating methods for monitoring the device memory and simulating the machine side operations using GX Simulator. (Sold separately.)	SH-080169 (13JU17)
GPP Function Software for Windows SW4D5C-GPPW-E SW4D5C-LLT-E Starting GPPW(Guidebook) This manual is intended for beginners of the SW4D5C-GPPW-E, SW4D5C-LLT-E. It describes how to install and start them and provides you with a basic knowledge and the methods for creating and editing circuits, making printouts, monitoring, and debugging showing a few illustrations. (Sold separately.)	IB-0800057 (13J966)
Structured Text (ST) Programming Instruction Manual Intended for beginners, i.e., those who create structured text program for the first time. Explains basic operations and functions using sample programs. (Sold separately.)	SH-080368E (13JF69)

Note: The manuals other than the Guidebook are contained on the CD-ROM with the corresponding software packages as sets.

Any of the manuals is available separately in printed form. Please indicate its manual number (model code) in the above list.

Abbreviations and Generic Terms in This Manual

Unless otherwise specified, the following generic names and abbreviations are used for explanations in this manual.

Generic Name/Abbreviation	Description
GX Developer	Generic product name of the product types SW8D5C-GPPW-E, SW8D5C-GPPW-EA, SW8D5C-GPPW-EV and SW8D5C-GPPW-EVA. -A means a multiple-license product, and -V an updated product.
1-license product	Abbreviation of the 1-license product of GX Developer or GX Simulator.
Multiple-license product	Abbreviation of the multiple-license product of GX Developer or GX Simulator.

Product Makeup

GX Developer and GX Simulator are made up of the following products.

Type	Product Name	Quantity
SW8D5C-GPPW-E(V)	GX Developer Version8 (1-license product) (CD-ROM)	1
	End-user software license agreement	1
	Software registration Card	1
	License agreement	1
SW8D5C-GPPW-E(V)A	GX Developer Version8 (Multiple license product) (CD-ROM)	1
	End-user software license agreement	1
	Software registration Card	n*1
	License agreement	1

*1: The same number of software registration cards as that of licenses are packed with the product.

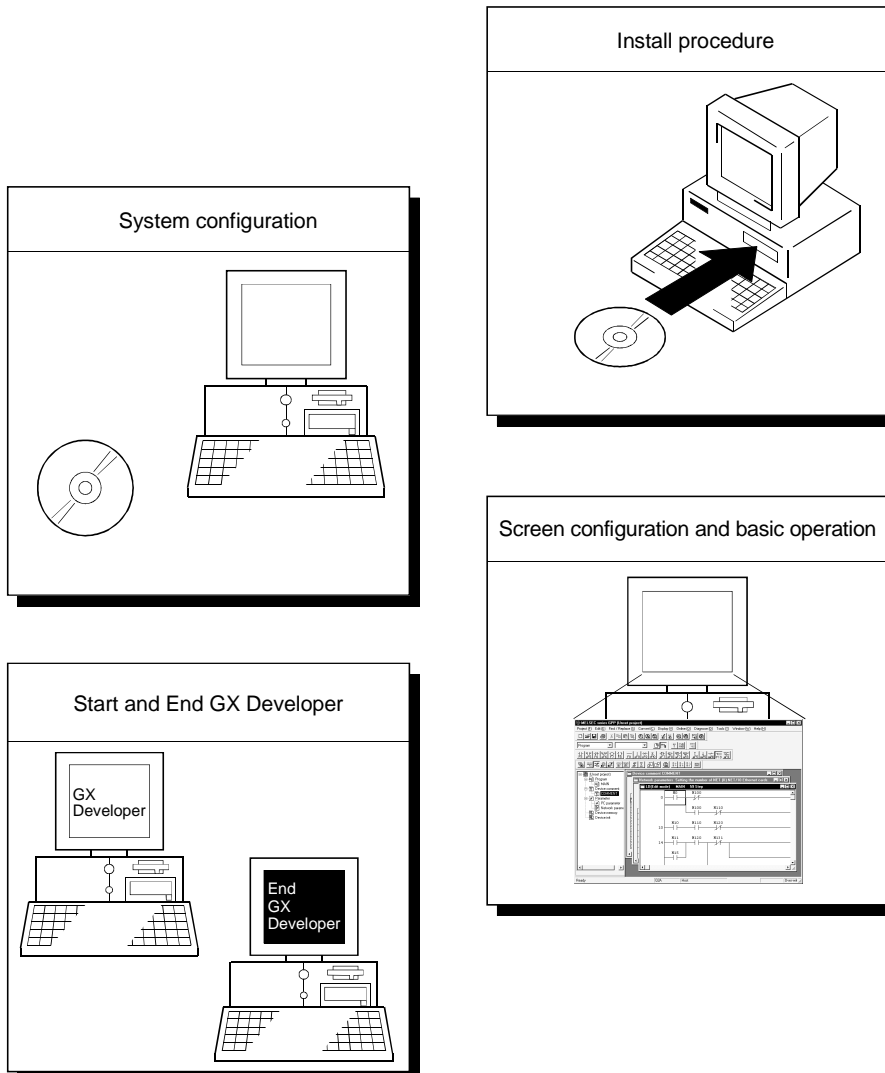
NOTICES
<ul style="list-style-type: none"> • We don't guarantee the commercially-available Microsoft® Windows® Operating System-based software products that have been introduced in this manual. • We hold the copyrights of this software package. • No part of this manual may be transcribed or duplicated in any form without prior permission by Mitsubishi Electric Corporation. • We have attempted to cover all the revisions of software and hardware, but this manual may not contain the latest revisions. • The software of this product requires one license to be purchased per computer. • We permit the user to use this software package (including this manual) based on the Software License Agreement. • We are not liable for consequences or influences due to this software package (including this manual). • The specifications of this software package and the descriptions in this manual may be altered in future without prior notice.

1. GENERAL DESCRIPTION

This manual describes the system configuration, installation procedure, start method, screen configuration, and basic operations of the following Microsoft® Windows® Operating System compatible products.

- GX Developer (CD-ROM Version)

The product type ended by "-V" is an update-only product.



2. SYSTEM CONFIGURATION

2.1 System Configuration

GX Developer is available to install into the PC that meets the operating environment specification in Section 2.2.

2

2.2 Operating Environment

The following table summarizes the operating environment.

Item		Contents
Peripheral device	Personal computer	Personal computer in which Windows® operates.
	PC CPU module	MELSEC-Q Series-compatible PC CPU module (CONTEC CO., Ltd.)
Personal computer main body	CPU	See “Applicable operating system and the corresponding required PC performance” shown below.
	Required memory	
Available hard disk space		150MB or more
Disk drive		CD-ROM drive (if using CD-ROM media)
Monitor		Resolution 800x600 pixels or higher However, set the resolution to 1024x768 pixels or higher when using the MELSECNET/G diagnostics function.
Communication interface		RS-232 port : Needed when communicating with the PLC CPU. (Required when accessing a PLC CPU other than the Q02H, Q06H, Q12H, Q12PH, Q25H and Q25PHCPU.) USB port : Can be used when communicating with the QCPU (Q mode). (Excludes the Q00J/Q00/Q01/Q02CPU and remote I/O modules.)
Operating system		Microsoft® Windows® 95 Operating System * ¹ Microsoft® Windows® 98 Operating System Microsoft® Windows® Millennium Edition Operating System Microsoft® WindowsNT® Workstation Operating System Version 4.0 Microsoft® Windows® 2000 Professional Operating System Microsoft® Windows® XP Professional Operating System Microsoft® Windows® XP Home Edition Operating System

*1: Windows® 95 does not support the structured text language function.

Applicable operating system and the corresponding required PC performance.

Item	Required PC performance	
	CPU * ²	Required memory * ³
Windows® 95 (Service Pack 1 or higher)	Pentium® 133MHz or higher	32MB or more
Windows® 98	Pentium® 133MHz or higher	32MB or more
Windows® Me	Pentium® 150MHz or higher	32MB or more
WindowsNT® Workstation 4.0 (Service Pack 3 or higher)	Pentium® 133MHz or higher	32MB or more
Windows® 2000 Professional	Pentium® 133MHz or higher	64MB or more
Windows® XP Professional	Pentium® 300MHz or higher	128MB or more
Windows® XP Home Edition	Pentium® 300MHz or higher	128MB or more

*2: Pentium® 300MHz or higher is recommended when creating label programs.

*3: 64MB or more is recommended when creating label programs.

POINT
<ul style="list-style-type: none"> • Instruction for use of the online manual Addition of memory ensures more comfortable use. • Instruction for use of the PDF data Use with addition of personal computer memory ensures comfortable operation. • Depending on the operating environment of the personal computer, editing on multiple screens opened for programming or like may cause a memory shortage error. When the personal computer is used with only GX Developer booted, the number of edit screens should be up to 40 as a guideline. • New functions of Windows® XP When Microsoft® Windows® XP Professional Operating System or Microsoft® Windows® XP Home Edition Operating System is used, the following new functions cannot be used. If any of the following new functions is used, this product may not operate normally. <ul style="list-style-type: none"> Start of application in Windows® compatible mode Fast user switching Remote desktop Big fonts (Details setting of Screen properties)

3. INSTALLATION AND UNINSTALLATION

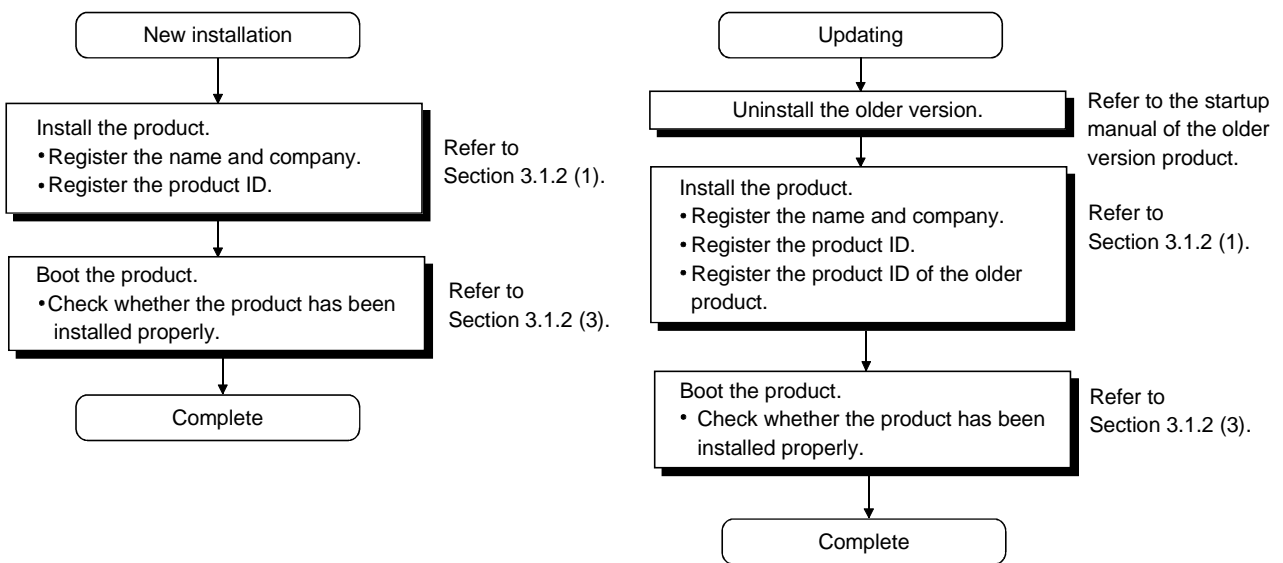
This chapter explains how to install and uninstall the product.

3.1 Installation

3.1.1 Installing Procedure

3

Install GX Developer in the following procedure.



POINT

If the DLL overwrite confirmation message appears during installation, choose "Yes" to overwrite the DLLs.
If they are not overwritten, the product may not be run properly.

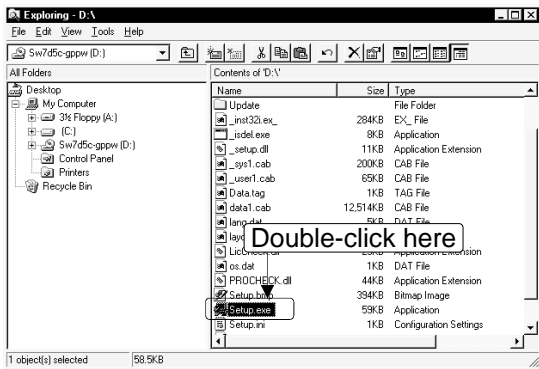
3.1.2 Installing Operation

Before starting installation, confirm the following.

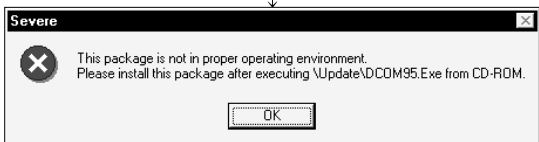
POINT
<ul style="list-style-type: none"> • Terminate all the other applications running under Microsoft® Windows® Operating System before installation. • When using Windows® XP Professional, Windows® XP Home Edition, Windows® 2000 Professional or Windows NT® Workstation 4.0, logon as a user who has the attributes of an Administrator (for computer management). • If the license key FD is valid, installing this product enables updating. (The license volume of the older version decreases by 1 license.)

3

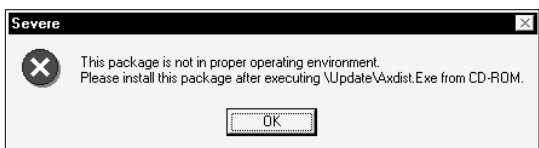
(1) Installing the product
(The screens of Windows® 98 are used in the explanation.)



1) Start Windows® Explorer and click the drive in which the disk has been inserted.
Double-click "Setup.exe".
On Windows® Explorer, choose [Start]-[Programs]-[Windows Explorer].



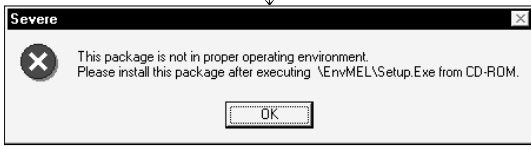
2) If either of the left screens appears, perform operation in accordance with the instructions given in (a) in "(2) When message appears at start of installation".
After the operation is over, restart installation operation.



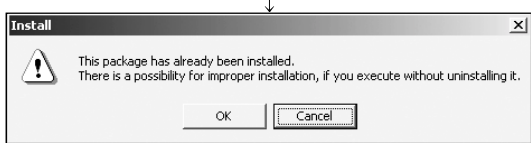
If the left screen appears, perform operation in accordance with the instructions given in (b) in "(2) When message appears a start of installation".
After the operation is over, restart installation operation.

(To the next page)

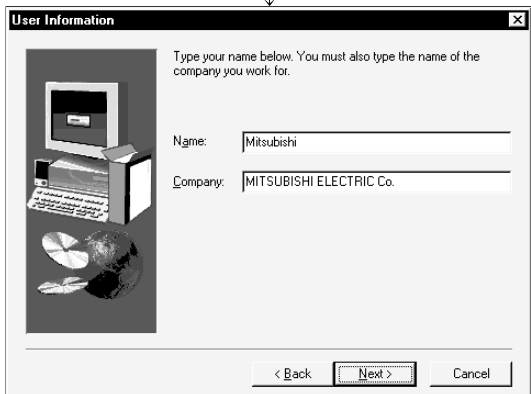
(From the previous page)



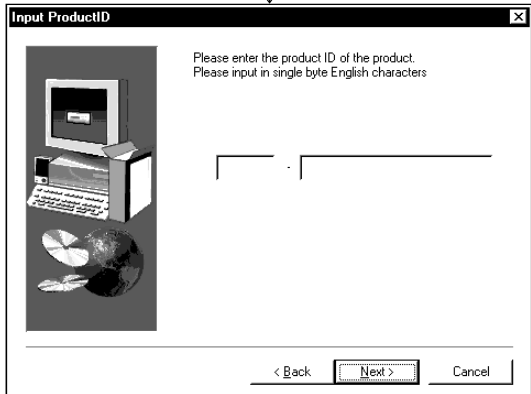
If the left screen appears, perform operation in accordance with the instructions given in (b) in "(2) When message appears at start of installation". After the operation is over, restart installation operation.



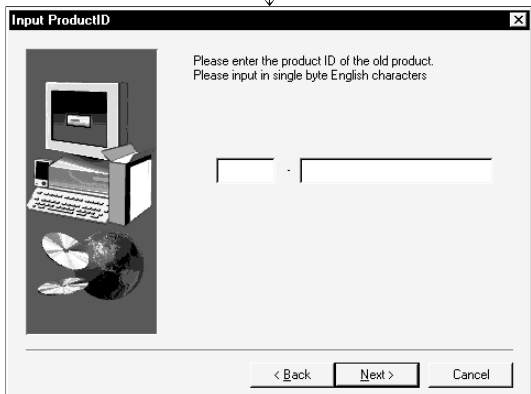
3) If the left message appears, click **OK** to uninstall the product once and then reinstall the product.



4) Type the name and company, and click **Next>**. As the confirmation dialog box appears, perform operation in accordance with the message.



5) Type the product ID and click **Next>**. The product ID is described in "Software User Registration Card" included with the product.



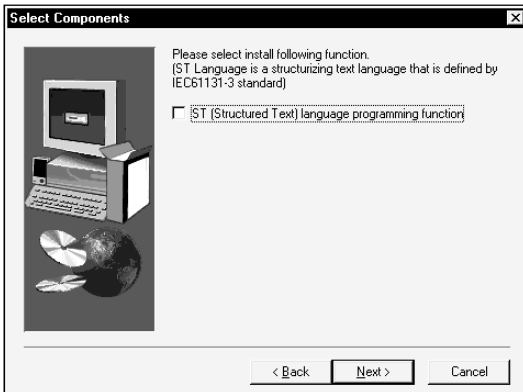
6) When the product is to be updated, the screen shown on the left appears. Type the product ID of the older product and click **Next>**.

The product ID of the older version is described in "Software User Registration Card" included with the product.

When newly installing the product, the left screen does not appear.

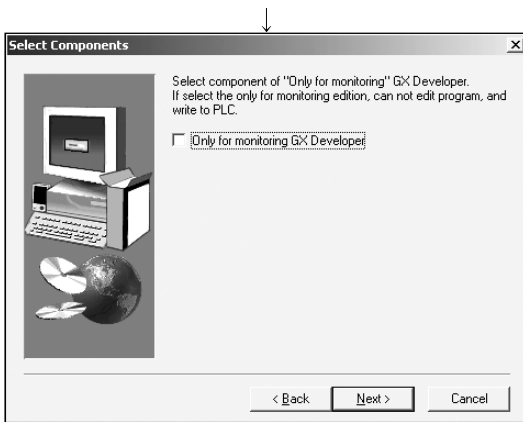
(To the next page)

(From the previous page)



7) When using structured text (ST) language, check the corresponding check box, and click **Next>**.

When structured text (ST) language is not required, just click **Next>**.

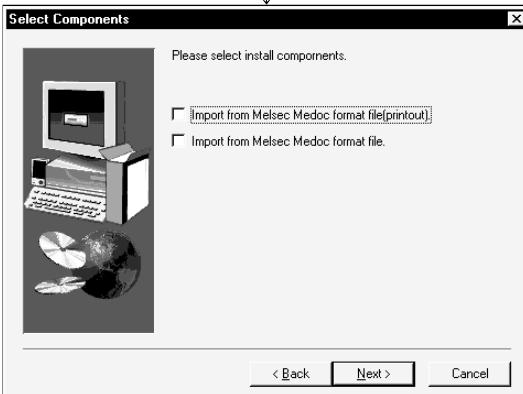


8) When using all functions, click **Next>**.

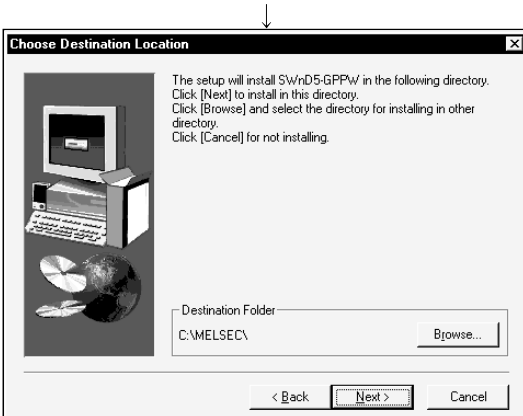
When installing monitoring-only GX Developer, turn on the check box and click **Next>**.

Installing the product as monitoring-only GX Developer prevents on-the-spot editing, accidental changes, and so on. (This disables such functions as write to PLC and PLC data deletion.)

Refer to the GX Developer Operating Manual for the functions available for monitoring-only GX Developer.



9) When you want to import to GX Developer the data created with MELSEC MEDOC or the data output as a printout data file, check the check box and click **Next>**.



10) Specify the installation Destination Folder.

If the installation Destination Folder displayed is correct, click **Next>**.

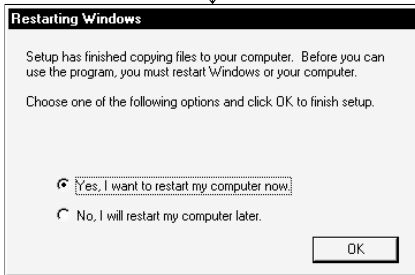
If you change the destination folder, click **Browse** and specify a new drive and folder.

(To the next page)

(From the previous page)

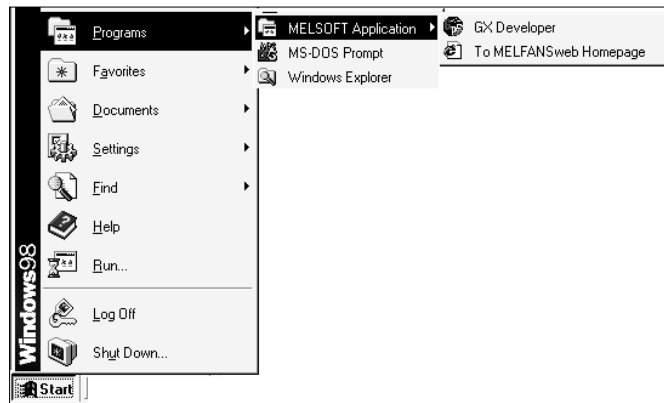


11) This completes installation.
Click **OK**.



12) Windows® must be rebooted if the screen shown on the left appears.

Installation of the product registers the icon as shown below.



REMARK

When Windows® XP Professional or Windows® XP Home Edition is used, the icons are registered to [Start] - [All Programs] - [MELSOFT Application].

(2) When message appears at start of installation

When the installation of this product starts, the "This package is not in proper operating environment" message appears, disabling normal completion of installation.

In such a case, close all applications and perform the (a) to (c) operation.

(a) Installation of dcom95.exe or Axdist.exe

Execute "/Update/dcom95.exe" or "/Update/Jaaxdist.exe" within the product (CD-ROM).

Then, restart the personal computer and install the product.

The exe file to be executed on the corresponding operating system is indicated below.

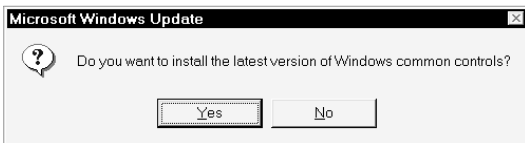
OS	File name
Microsoft® Windows® 95 Operating System	dcom95.exe
Microsoft® Windows® 98 Operating System	Axdist.exe
Microsoft® Windows NT® Workstation Operating System Version 4.0	Axdist.exe

(dcom95.exe and Axdist.exe are in the "Update" folder on CD-ROM.)

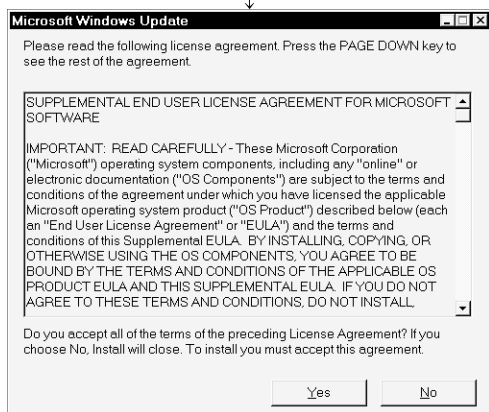
(b) Installation of 50comupd.exe

Execute "/Update/50comupd.exe" within the product (CD-ROM).

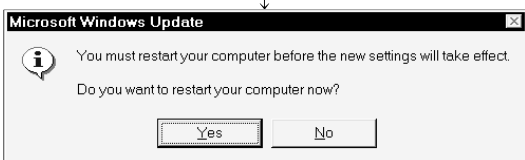
Then, restart the personal computer and install the product.



1) Click the **Yes** button to start updating Windows.



2) Accept the agreement on the left screen and click the **Yes** button.



3) Click **Yes** to restart.
After a restart, install the product.

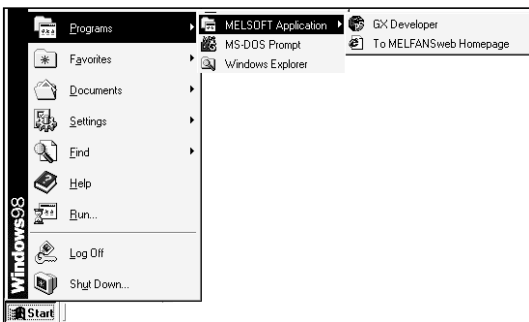
(c) Installation of EnvMEL

Execute "/EnvMEL/Setup.exe" within the product (CD-ROM).

Then, install the product.

* : After executing the above exe file, reinstall the product. If this product is not installed properly at this time, reboot the personal computer.

(3) Confirming that the product has booted

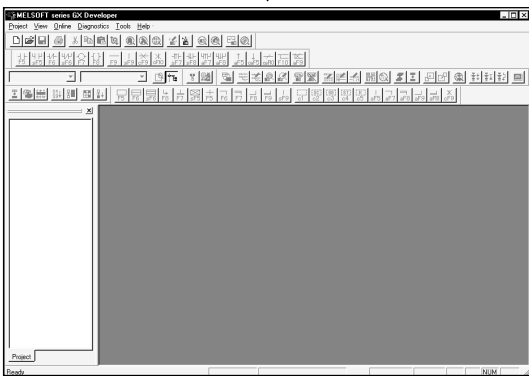


1) Click [Start] and move the cursor to the [Programs]-[MELSOFT Application] menu.

*: [All Programs] appears when using Windows® XP Professional or Windows® XP Home Edition.



2) Click the [GX Developer] menu.

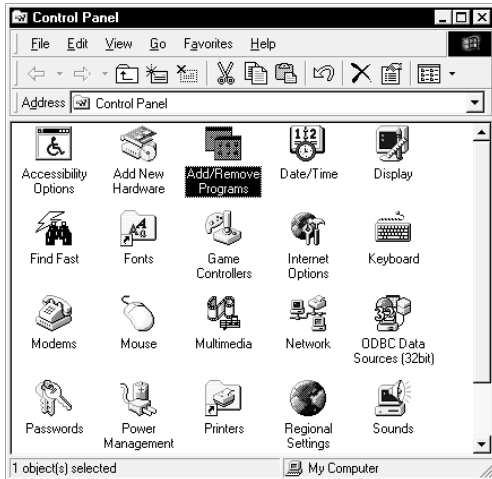


3) The product boots.
If displayed, the screen shown on the left indicates normal installation.

3.2 Uninstallation

This section describes the operation for removing the product from the hard disk.

Uninstallation of the product

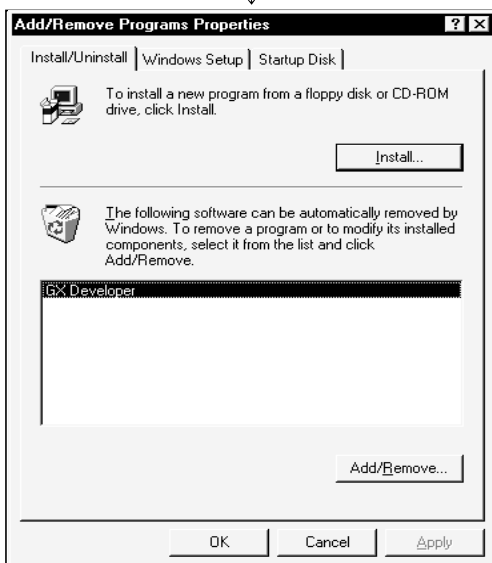


- 1) From the Control Panel, choose and double-click "Add/Remove Programs".
To display the Control Panel, choose [Start]-[Settings]-[Control Panel].

REMARKS

When using Windows® XP Professional or Windows® XP Home Edition, choose "Add or Remove Programs" from the Control Panel.

To display the Control Panel, choose [Start] - [Control Panel].



- 2) Select the software package to be deleted/modified. Choose "GX Developer".
After selection, click **Add/Remove...**.

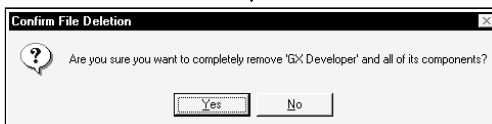
The screen shown on the left is the one for Windows® 98. The screen displayed varies with the OS.

REMARKS

The screen shown on the left is that of Windows® 98. The displayed screen varies with the OS.

When using Windows® 2000 Professional, Windows® XP Professional and Windows® XP Home Edition, perform the following operation.

- (a) Click "Change/Remove Programs".
- (b) Click "GX Configurator".
- (c) Click the "Change/Remove".



- 3) Check whether you will remove the software package or not.

When uninstalling it, click **Yes**.

Uninstallation starts.

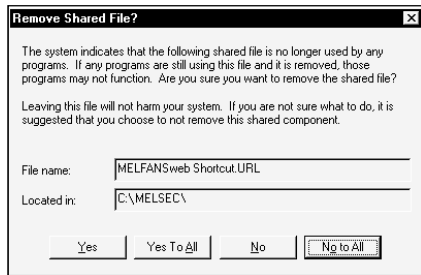
When not uninstalling it, click **No**.

This returns to the preceding screen.

* Components indicate the icons and files installed.

(To the next page)

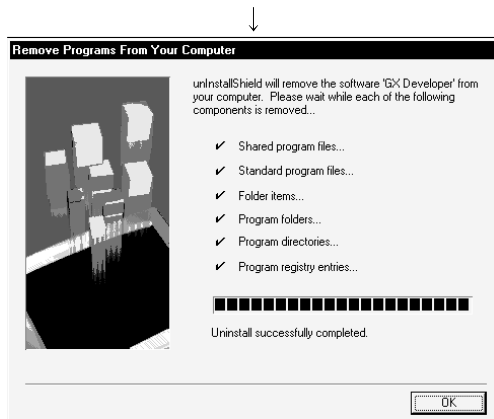
(From the previous page)



4) If the left screen has appeared, click the **No To All** button.

Clicking the **Yes** or **Yes To All** button deletes all shared files of Windows® compatible MELSOFT software.

Therefore, when deleting the product only, click **No To All** button.



5) Click **OK** when the message indicating the end of removal has appeared.

When the message indicating completion has appeared, uninstallation is complete.

3.3 Installing the USB Driver

When Windows® 2000 Professional, Windows® XP Professional and Windows® XP Home Edition is used, the USB driver must be installed to make CPU USB communication.

The following is the USB driver installation procedure.



If the USB driver cannot be installed, check the following setting.

- When Windows® 2000 Professional is used
If you have selected "Block-Prevent installation of unsigned files" after [Control Panel] - [System] - [Hardware] - [Driver Signing], the USB driver may not be installed.
Choose "Ignore-Install all files, regardless of file signature" or "Warn-Display a message before installing an unsigned file" for [Driver Signing], and install the USB driver.
- When Windows® XP Professional or Windows® XP Home Edition is used
If you have selected "Block-Never install unsigned driver software" after [Control Panel] - [System] - [Hardware] - [Driver Signing], the USB driver may not be installed.
Choose "Ignore-Install the software anyway and don't ask for my approval" or "Warn-Prompt me each time to choose an action" for [Driver Signing], and install the USB driver.

[1] When Windows® 2000 Professional is used

The following indicates the procedure for installing the USB driver when using Windows® 2000 Professional.



(To the next page)

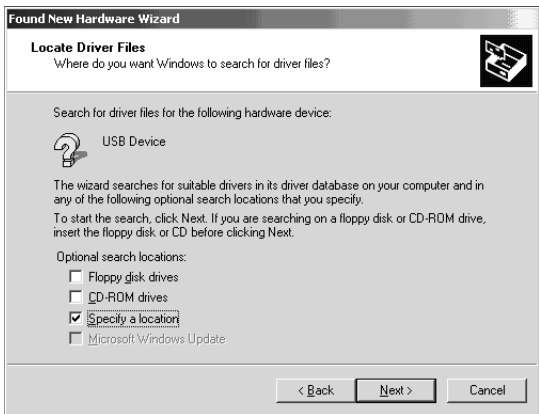
- 1) The screen shown on the left appears when you connect the personal computer and QCPU (Q mode) by the USB cable.

Click the .

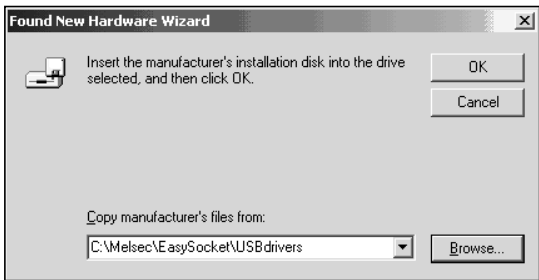
(From the previous page)



2) Choose "Search for a suitable driver for my device (recommended)" and click the **Next>**.



3) Check "Specify a location" and click the **Next>**.



4) As the left screen appears, set the product installation destination "Easysocket\USBdrivers" and click the **Next>**.
The screen shown on the left shows the example of setting C:\MELSEC\Easysocket\USBdrivers.
If volume MELSOFT products have been installed, browse the installation destination of the first product.



5) The screen on the left appears to indicate completion of installation. Click the **Finish** to terminate installation.

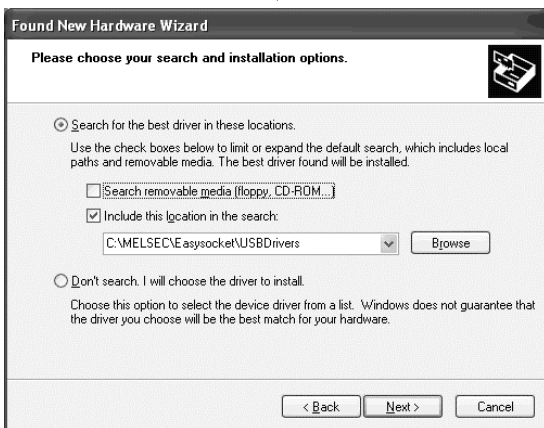
(Completion)

[2] When Windows® XP Professional and Windows® XP Home Edition is used

The following indicates the procedure for installing the USB driver when using Windows® XP Professional or Windows® XP Home Edition.



1) The screen shown on the left appears when you connect the personal computer and QCPU (Q mode) by the USB cable. Choose "Install from a list or specific location [Advanced]" and click the **Next>**.



2) As the screen on the left appears, choose "Include this location in the search". Check "Include this location in the search" and set "Easysocket\USBDrivers" of the folder where GX Developer was installed. After setting, click the **Next>**. The screen shown on the left shows the example of setting C: \MELSEC\Easysocket\USBDrivers. If volume MELSOFT products have been installed, browse the installation destination of the first product.



3) As the screen on the left appears, click the **Continue Anyway**.

REMARKS

Though the screen on the left appears during installation of the USB driver, we have confirmed that the USB driver operates properly using Windows® XP Professional or Windows® XP Home Edition. (No problem will occur after installation of the USB driver.) Click **Continue Anyway** to continue the installation of the USB driver.

(To the next page)

(From the previous page)



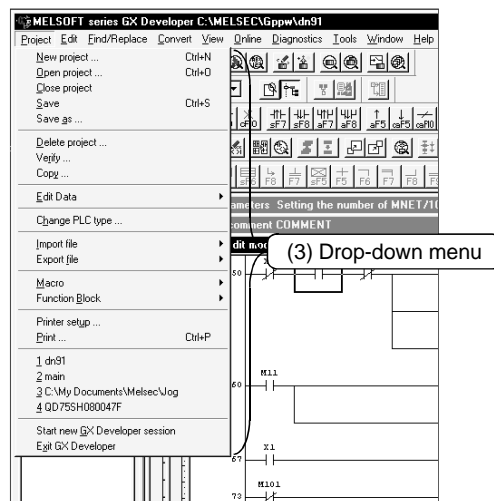
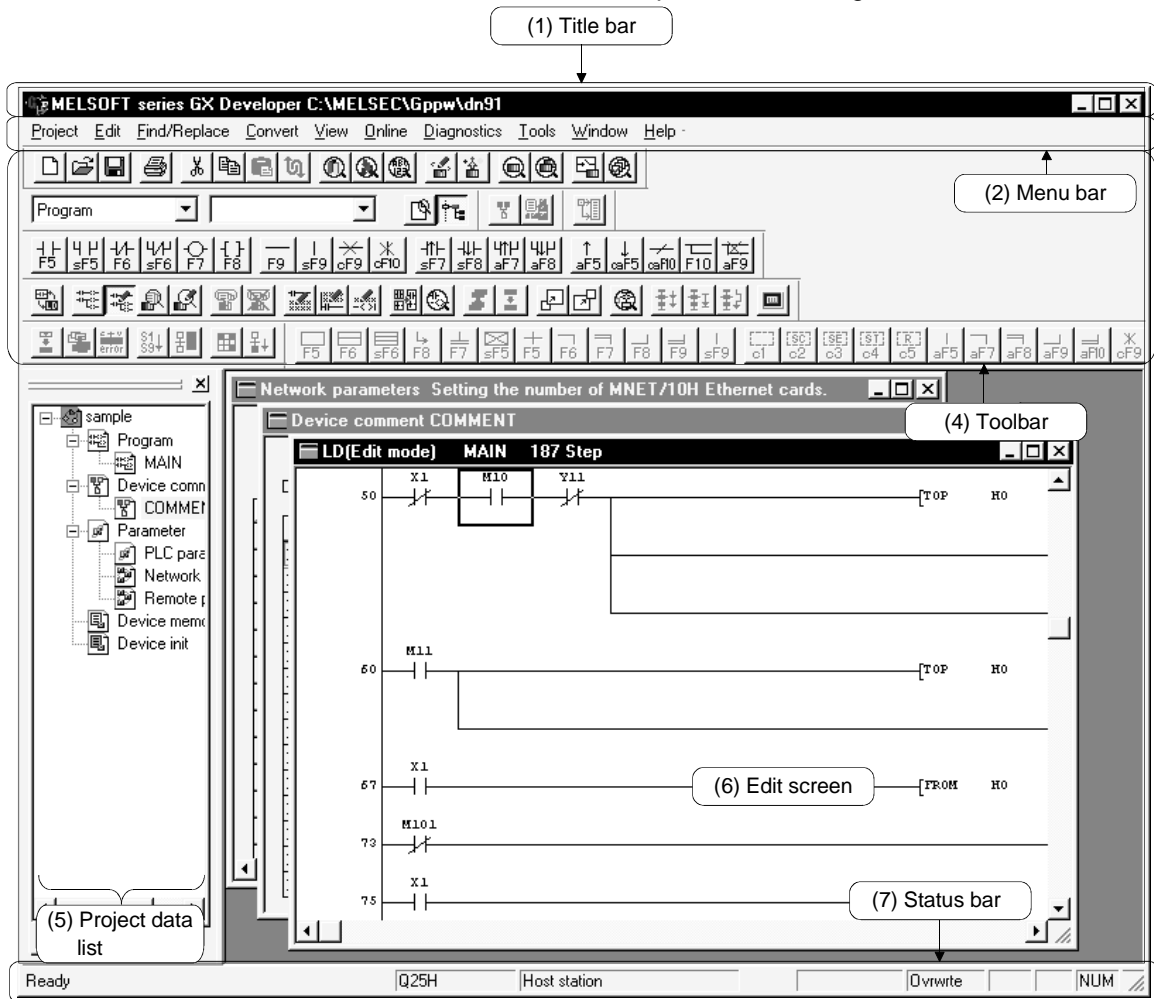
(Completion)

- 4) The screen on the left appears to indicate completion of installation. Click the **Finish** to terminate installation.

4. USING GX Developer

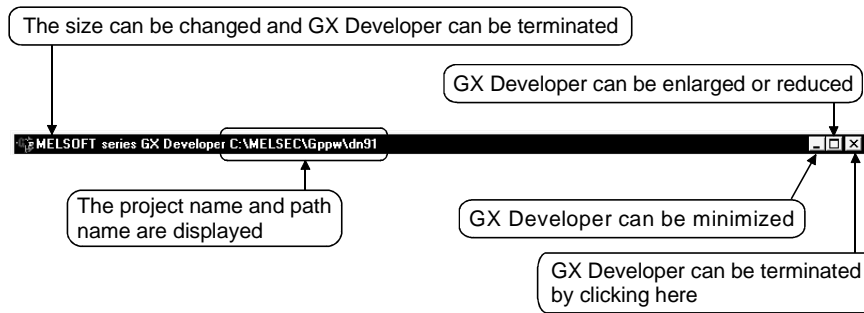
4.1 GX Developer Edit Window and Various Tools

This section describes the GX Developer window configuration and various tools.



(1) Title bar

Indicates the name of the open project

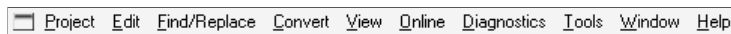


To close multiple windows at once, select [Windows] → [Close all windows].

(2) Menu bar

Displays the names of GX Developer menus.

If a desired menu is selected, the drop-down menu is displayed so that various functions can be used.

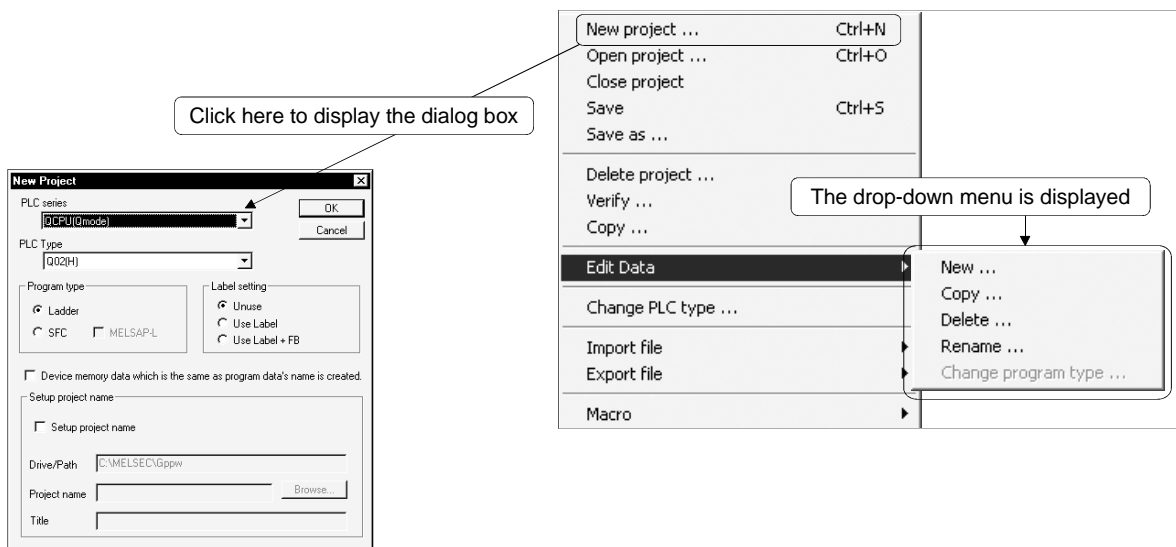


(3) Drop-down menu

Displays the names of GX Developer functions.

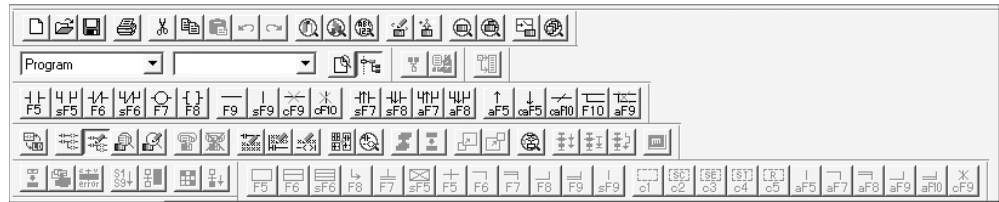
When "▶" is displayed at the rightmost end of the menu item, the drop-down menu of the selected item is displayed.

When "..." is displayed next to a function name, a setup dialog box is displayed by selecting the item.



(4) Toolbar

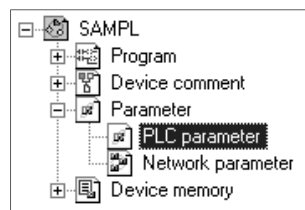
Displays the buttons for the frequently used functions assigned on the menu bar.



(5) Project data list

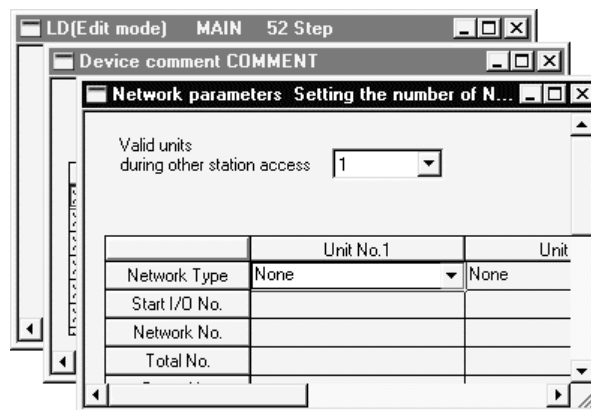
Lists project data by class.

The circuit creation dialog box and other dialog boxes can be directly called.



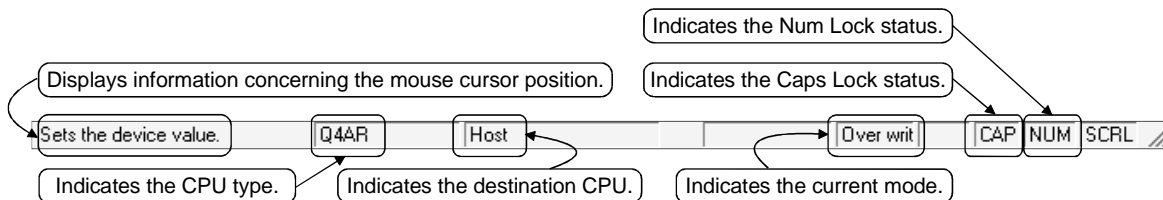
(6) Edit window

Displays the circuit creation dialog box and comment creation dialog box to make settings for circuits, comments, and parameters.



(7) Status bar

Displays the GX Developer status information.

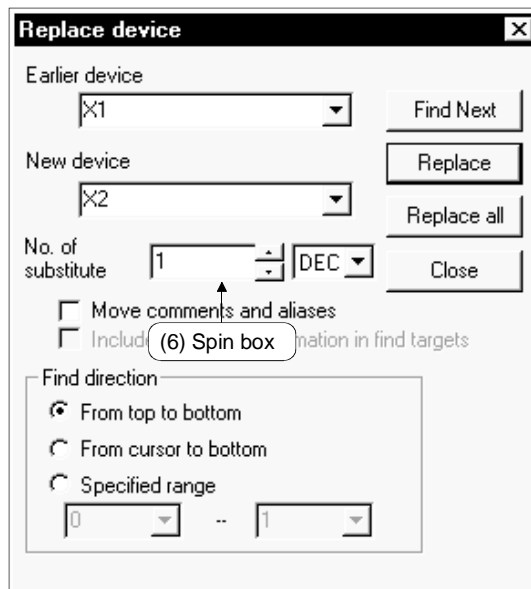
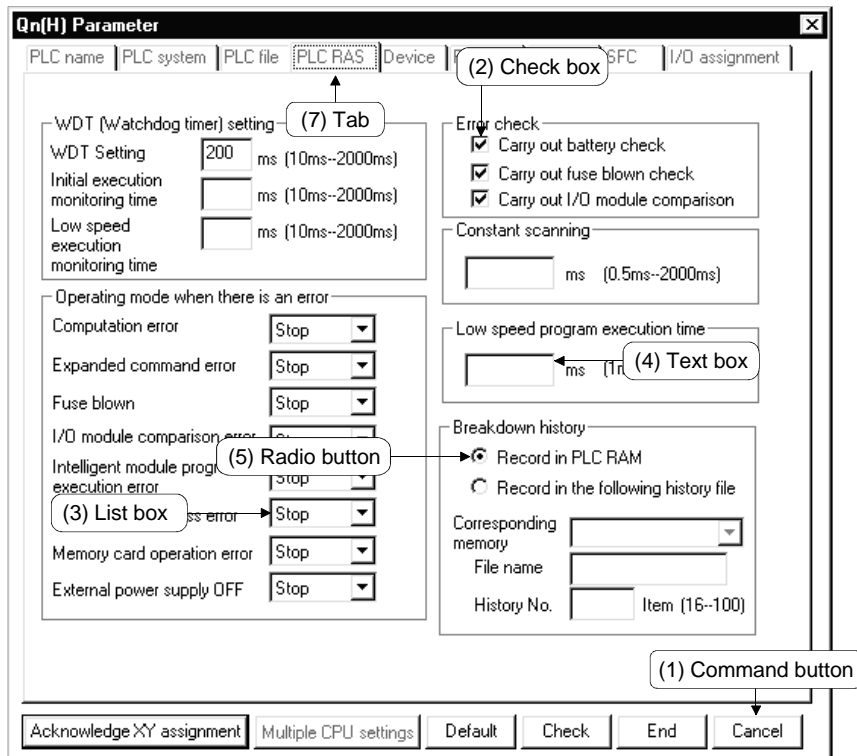


(8) Displaying a handy menu

Work efficiency can be increased by clicking the right mouse button to display a menu of items related to the current work.

When you are editing a circuit or comment, you can select [Cut], [Copy], [Paste] or [Find Device] from this menu.

4.2 Dialog Box Basic Operations



(1) Command button

Buttons such as and .

Click the button to execute the item.

(2) Check box

Click a checkbox to select and execute an item.

(3) List box

Click to drop-down the list of the items, then click a desired item to select.

(4) Text box

Enter characters with the keyboard.

The text box may permit only numeric values or letters.

(5) Radio button

Click for the item to be selected.

(6) Spin box

Spin boxes may permit direct value input or selection of a value by clicking .

When inputting a value directly, click and enter a numeric value with the keyboard.

When clicking for selecting a value, clicking increments the value and clicking decrements the value.

(7) Tab

For tab switching, click the desired tab in the property pages dialog box.

APPENDICES

APPENDIX 1 Questions and Answers about Personal Computers

This section provides basic information in question & answer style. Please see the following information as necessary.

- Q1. What happens when the monitor with a resolution of 800x600 pixels or lower is used?
- A1. The icon near the edges of the screen may not be displayed entirely, so that the operations cannot be performed using that icon.
Read the manual and set the dedicated resolution high enough to display the entire icon.
- Q2. What is the operating environment?
- A2. It refers to a combination of hardware equipment needed to fully utilize GX Developer, GX Simulator, etc., and basic operating software (Refer to Section 2.2).
- Q3. Is the MELSOFT software package available under Microsoft® Windows® 3.1 operating system?
- A3. The MELSOFT software package is not available under Windows® 3.1.
- Q4. What happens when the CPU is Pentium® 133MHz or slower?
- A4. When the clock speed of the CPU is slower than 133MHz, it takes longer for operations such as screen display.

APPENDIX 2 Notes on GX Developer

This section lists the questions and answers to assist you in solving the problems encountered during GX Developer operation.

Q1. Each circuit diagram is enclosed in white lines during circuit editing depending on the type of video card installed in the personal computer (card storing the characters, figures, and pictures to be displayed on the monitor as data). How can these white lines be deleted?

A1. Make necessary settings from the Windows® 95/ Windows® 98/ Windows® Me/ Windows NT® Workstation 4.0/ Windows® 2000 "Control Panel".

Operating procedure

(1) Open "Control Panel".



(2) Open "System".



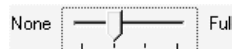
(3) Click the "Performance" tab.



(4) Click the "Graphics" button.



(5) Set "Hardware acceleration" to the entry (second entry) next to "None".



Q2. What action should be taken for the message "Can not allocate Share memory" or "Initialization failed" displayed at the start of the GX Developer software package?

A2. Restart the GX Developer software package or restart Windows® 95/ Windows® 98/ Windows® Me/ Windows NT® Workstation 4.0/ Windows® 2000 and start the GX Developer software package again.

Q3. Why does it take time to display the dialog box after starting setup.exe on Section 3.1.2?

A3. It takes time when the memory-resident program (such as Virus checker) is running.

- Q4 What points are to be noted in installing Anti-virus Software (commercially available software package) on the personal computer.
- A4 (a) At the start of Anti-virus Software
Because it takes time for initialization at the start of Anti-virus Software, other applications in "StartUp" group may not be started.
In addition, it may take time to accept the subsequent operations after storage into the task tray.
These phenomena vary depending on the specifications of the operating environment (CPU, memory, etc.).
It is well known that this problem occurs frequently when the CPU is Pentium® 100 MHz or lower.
- (b) Effects on the system
When Anti-virus Software is already started, system load increases because Anti-virus Software checks the files.
For this reason, it may take extra time for starting the application depending on the operating environment.
These phenomena vary depending on the operating environment specifications (CPU, memory, etc.).
It is well known that this problem occurs frequently when the CPU is Pentium® 100 MHz or lower.
- (c) Effects on applications
When applications cannot be started or run normally after Anti-virus Software has been installed, check the operations of the applications according to the following procedure:
- 1) Uninstall Anti-virus Software and restart the system to check the operations of the applications.
If the same problem recurs, the cause of the problem is not Anti-virus Software.
In such a case, contact our application support engineers.
 - 2) When the applications run normally after Anti-virus Software has been uninstalled, install Anti-virus Software again and change the monitor setting to "Custom Monitor." In addition, change the selection of the checkboxes for Extension Designation or Monitor Function.
- * When the system does not work well after the step 1) has been performed, install Windows® 95/ Windows® 98/ Windows NT® Workstation 4.0 and/or applications again.

- Q5. When a program is read from a floppy disk, it cannot be read from the floppy disk so long as the disk is write protected. Why not?
- A5. Because multiple GX Developer can be started, access to files in the same floppy disk may occur simultaneously. In such a case, an access flag is written to a floppy disk at the time of floppy disk access to prevent the files in the disk from being accessed from another GX Developer. Namely, no files can be read in this system so long as the floppy disk is write protected.

Microsoft Windows, Microsoft Windows NT are registered trademarks of Microsoft Corporation in the United States and other countries.

Pentium is a registered trademark of Intel Corporation in the United States and other countries.

Other company and product names herein are either trademarks or registered trademarks of their respective owners.

SPREAD

Copyright (C) 1998 Farpoin Technologies, Inc.

GX Developer Version 8

Operating Manual(Startup)

MODEL	GXDEV8-O-IN-EL
MODEL CODE	—
IB(NA)-0800242E-G(0704)MEE	

 **MITSUBISHI ELECTRIC CORPORATION**

HEAD OFFICE : TOKYO BUILDING, 2-7-3 MARUNOUCHI, CHIYODA-KU, TOKYO 100-8310, JAPAN
NAGOYA WORKS : 1-14 , YADA-MINAMI 5-CHOME , HIGASHI-KU, NAGOYA , JAPAN

When exported from Japan, this manual does not require application to the Ministry of Economy, Trade and Industry for service transaction permission.

Specifications subject to change without notice.